



## CORPORATE PROFILE – ENVIRONMENTAL CONSULTING

Hamer Environmental is dedicated to helping clients solve natural resources issues through state of the art scientific research. Since 1992, we have provided quality environmental consulting to private companies, engineering firms, conservation groups, universities, tribal entities and government agencies.



### Areas of Expertise

Our team of creative and innovative scientists takes pride in performing a wide variety of environmental studies, impact assessments, monitoring and documentation related to:

- Onshore/Offshore Wind energy
- Solar energy
- Geothermal energy
- Transmission lines
- Communication towers
- Hydroelectric facilities
- Forestry
- Road construction
- Marine shoreline developments

Our natural resource team of wildlife & fisheries biologists, botanists, ecologists, & wetland scientists provide professional services related to:

- Threatened and Endangered species
- Endangered Species Act consultations
- Biological Evaluations and Biological Assessments
- Impact Assessments and Risk Assessments
- Habitat assessments and habitat modeling
- Habitat Conservation Plans
- Mitigation and Adaptive Management Plans
- NEPA and SEPA documentation
- Siting studies and permitting assistance
- Habitat restoration plans



### Our Network

Hamer Environmental has two offices, one in Mount Vernon, WA and the second in Portland, OR. During the field season, we maintain temporary field offices throughout the U.S. We are also partnering with AZIMUT, a French environmental services company and providing our joint expertise to offshore and onshore wind energy clients.

Contact: **Tom Hamer**, P.O. Box 2561, 1510 South 3rd Street, Mt Vernon, WA, 98273, USA  
Phone: (360) 899-5156 Fax: (360) 899-5146 Email: [Hamer@HamerEnvironmental.com](mailto:Hamer@HamerEnvironmental.com)  
Website: [www.HamerEnvironmental.com](http://www.HamerEnvironmental.com)

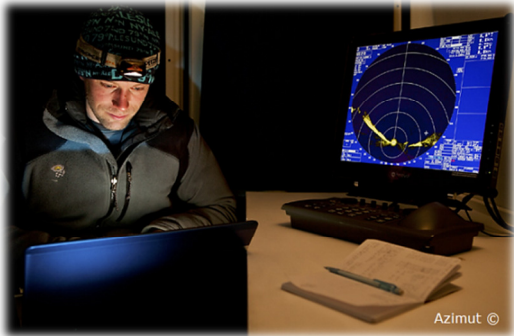


Schedule  
Contract GS-10F-087AA



## Our Business Values

**Hamer Environmental** is committed to excellence in natural resource consulting and in maintaining our core values. We believe quality environmental studies executed with insight and integrity will offer the answers to today's environmental problems. We establish life-long relationships with our clients. Caring for their environmental needs is the hallmark of our success. As we grow into new markets, our goal is to expand our knowledge while continuing to provide our clients with valued and trusted service.



We offer custom-designed technologies and solve environmental challenges with a professional, cost-efficient and scientific approach. We provide timely results and present clear and comprehensive information to those who manage or develop natural resources. The combination of experience, knowledge, and advanced technology means that we can provide our clients with the environmental solutions they need to successfully develop their projects.

Our current staff of professionals includes specialists in terrestrial and marine biology, ecology, forestry, botany, wetlands, fisheries, statistical analysis and GIS. Our staff may also be joined on projects by associates & specialists in other fields. Please consult our website for a complete list of associates.



## Key Personnel

**Tom Hamer**, M.Sc. – Director & Wildlife Ecologist – Siting studies, avian studies, threatened and endangered species, impact assessment, mitigation plans, population monitoring, HCP's, research design, bird migration, raptors, ornithological radar, Section 7 and Section 10 ESA consultations, BA's, BE's.

**Nathalie Denis**, B.Sc., PMP - Environmental Scientist - Research design, project management, data analysis, habitat assessments, siting studies, seabird ecology, threatened & endangered species, avian automated radar.

**Erin Coldazier**, B.Sc. – Plant Ecologist - Wetlands, rare plants, moss and lichens, rare fungi, threatened & endangered species, cover typing, mitigation and restoration plans, noxious weeds, habitat assessments.

**Matt Reed**, B.Sc., - Wildlife Biologist - Avian habitat delineation, avian point counts, avian radar technician for migrating birds and marbled murrelets, bats.

**Kelley Turner**, M.Sc., - Biologist - Amphibians, benthic and terrestrial invertebrates, zooplankton, fish, small mammals, water quality, sedimentation, terrestrial & bathymetric elevation mapping, stream habitat & stability assessments.

**Dan Varland**, Ph.D., Biologist - Wildlife research, wildlife management, forest/wildlife issues, forest habitat management, habitat conservation plans, bird of prey specialist including studies of bald and golden eagles.



## Key Associates

**Jake Verschuyf**, Ph.D. - Landscape ecology, biodiversity studies, statistical analysis and research design.

**Joshua Stumpf**, M.Sc. – Bats expert, small mammals, herpetofauna, habitat modeling, landscape analyses, statistical analyses, computer simulation.

**Lars Holmstrom**, Ph.D. – Risk of collision models, mathematical modeling, simulation, and statistical analysis.

**Brady Green**, M.Sc. – Freshwater aquatics, biological assessments for federally listed fish species, salmon habitat restoration plans, assessment of aquatic habitats, stream surveys, riparian surveys, permitting.